

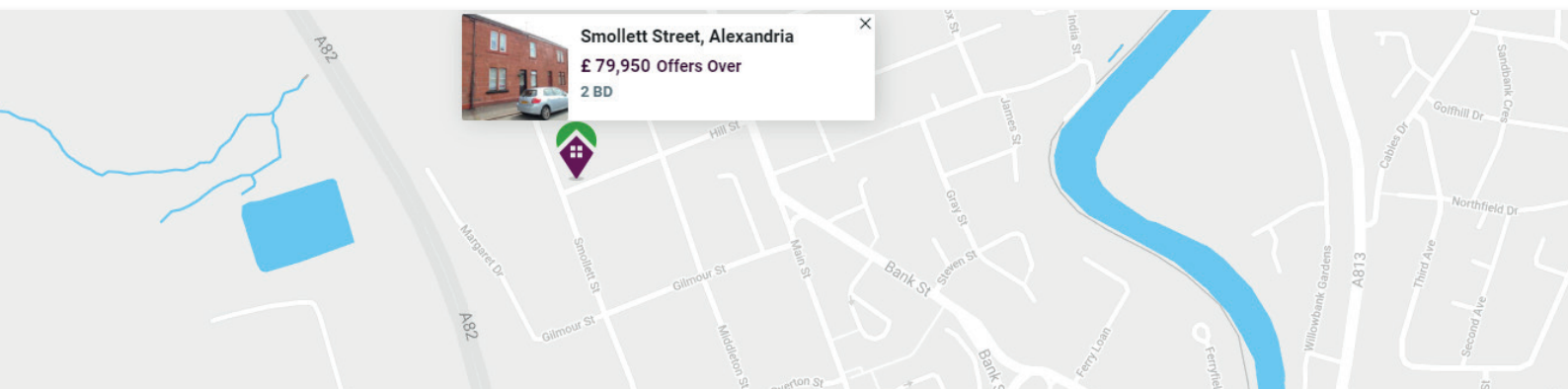


Smollett Street, Alexandria
Offers Over £79,950
Outstanding 2 bedroom ground floor luxury flat

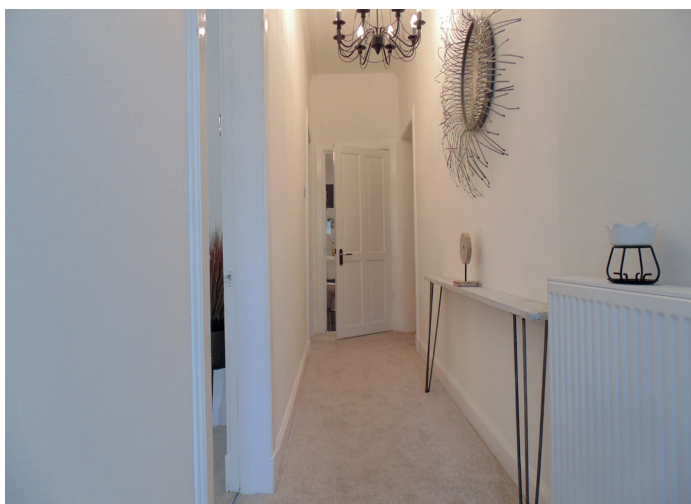


Outstanding ground floor flat. The agents GPM are delighted to offer a 2 bedroom luxury flat enjoying one of the most sought after locations in Alexandria minutes walk from the local Christie Park.

The subjects, have been extensively upgraded with credit to the current owners for the quality of fixtures and fittings on offer and includes, amongst others, quality flooring extending throughout the property, a new fitted kitchen with base and wall mounted storage units in high gloss white, all new appliances. There are 2 double bedrooms and also a new fully tiled modern shower room. The property has gas central heating and double glazing. The overall accommodation comprises a pleasing entrance hallway, access via vestibule to entrance hall proper. A good size lounge has ample floor space for a dining table, natural light from double glazed window facing to the rear of the property, large walk in recess cupboard, to focal point is a timber fire surround on tiled hearth, shelved alcove to one side. An archway gives open plan access to the 'L' shaped kitchen featuring base and wall mounted storage units in high gloss white with complimentary worktops to match, inset ceramic hob with electric oven below, stainless steel sink unit, natural light is gained from double glazed window facing to the side of the property, a white PVC door gives access to the rear garden. Two double bedrooms situated to



the front and rear of the property and have ample floor space for free standing bedroom furniture. A modern shower room features a white wc, wash hand basin within vanity unit and walk in shower cubicle with mains shower enclosed, complimentary ceramic tiling to full height on walls and floor, double glazed window faces to the side of the property, chrome towel radiator, inset spot lighting to ceiling The property is set in Smollett Street where there is well maintained resident garden grounds to the rear including private lane which extends the full length of the terrace giving access, if required, to the rear door of the subjects. The property whilst enjoying peaceful residential surroundings, is ideally situated within walking distance of all the local Christie Park and all the amenities in Alexandria including Christie Park primary school. Balloch including shopping, schooling which includes the recently built Balloch campus primary school and recreational facilities such as Balloch Castle Country Park, the Lomond Shores Tourist and Retail Development and the scenic beauty of Loch Lomond are all a few minutes drive from the property.



Lounge 14'10" x 11'
Kitchen 7'10" x 7'10" 'L' shaped
Bedroom 13'2" x 11'8"
Bedroom 14' x 9'4"
ENERGY RATING D

Contact us

GPM Estate Agents

93 Main Street,
Alexandria,
G83 0NX

01389 721200

www.gpmproperty.com

enquiries@gpmproperty.com

